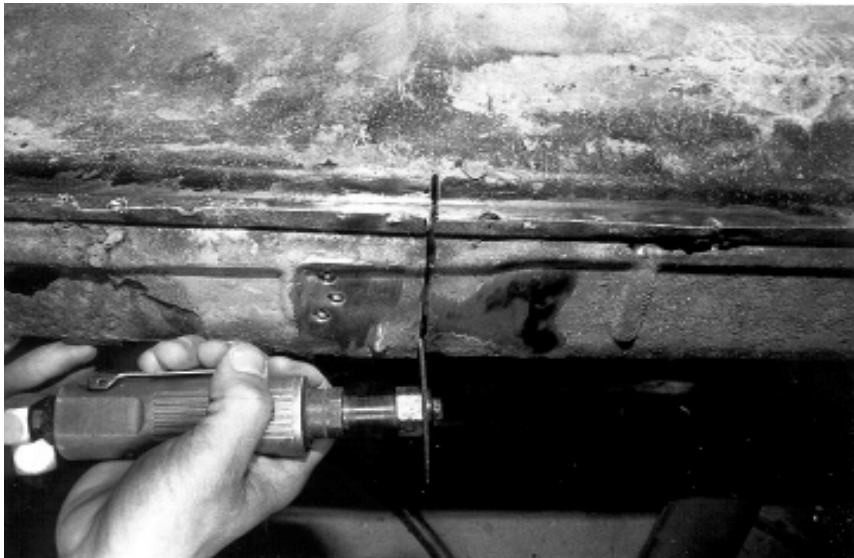


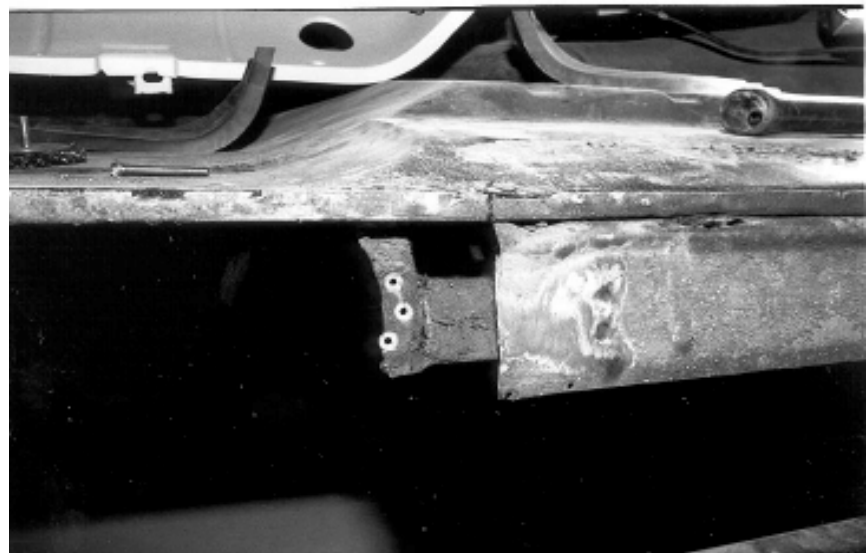
PARTIAL INSIDE ROCKER REPLACEMENTS

1. If you need to replace about a one foot long section, drill out the spot welds the necessary length.



2. Now take your die grinder and cut out the section that needs to be replaced. It is best to cut in the center of where a brace is, so that when you fit the new inner rocker section you will not have to do as much work because the seam will be hidden behind the floor brace.

3. You can see that since you have removed the small section of the inner rocker the floor brace is showing.



4. Now take the piece you cut out and match it exactly with the new panel from C.A.R.S. INC including grooves. Ect.



5. Take a straight edge adding about a 1/4 inch wider piece then you need and mark it with a scribe. To allow for trimming later.

6. Take a permanent marker and mark on the scribe line so you can see it easily.



7. Cut it with the die grinder on the lines.



8. Take that section and slide it on the back side of the rocker. Put a scribe mark along the edge of the new piece of the existing rocker. (Cut it with your die grinder: right on the line and straight so the two ends will meet flush with no over lapping.

9. Stitch weld it up. Most often you will not have to replace the whole section of the inside rocker, so this method will save time.

